

LW100 – Compact Float Level Switch



- ▶ Low cost
- ▶ Compact design
- ▶ Top or bottom mounting
- ▶ NBR wetted parts
- ▶ Measuring range up to 4m



With liquid level fluctuation, a magnetic float triggers the switch inside of the tube.

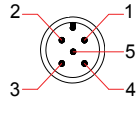
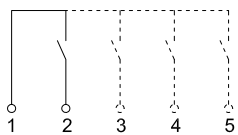
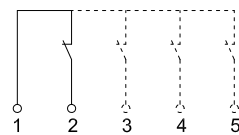
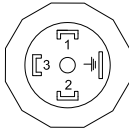
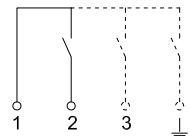
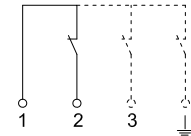
Specifications

<b>Applicable Medium</b>	Liquids
<b>Pressure Rating</b>	5 bar
<b>Medium Temperature</b>	-20...80°C
<b>Switching Output</b>	NC/NO configurable
<b>Materials</b>	
Process Connection	Anodized aluminum
Tube	304 stainless steel
Float	NBR
Sealing	NBR (PTFE customizable)
<b>Protection Class</b>	IP65(Solenoid plug), IP67(M12x1 plug)
<b>Electrical Connection</b>	M12x1 plug, solenoid plug
<b>Temperature Warning Switch</b>	Optional function, for details please refer to "Order Code".

Applications

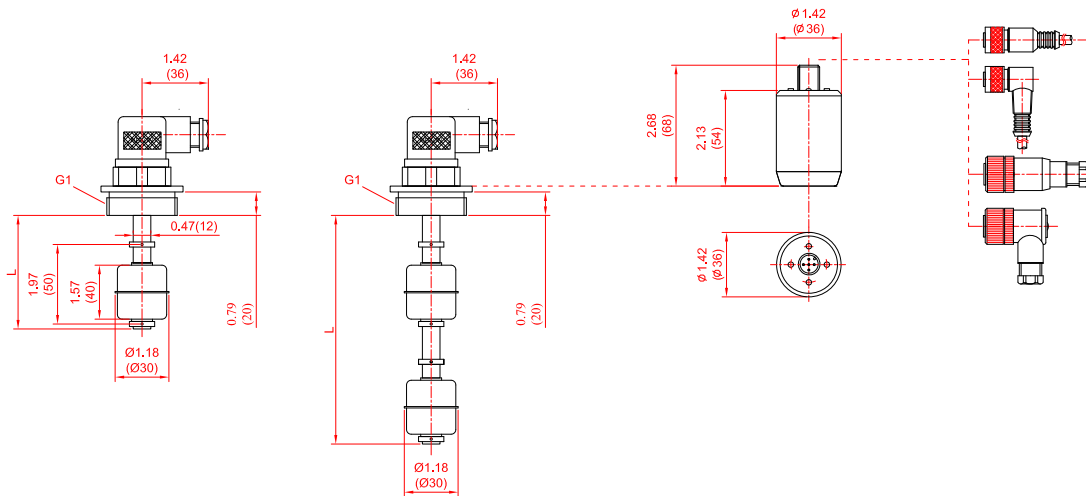
- ▶ Papermaking
- ▶ Petrochemical
- ▶ Water treatment

Wiring

Wiring	Normally opened	Normally closed												
 <table border="1" style="margin-left: 20px;"> <thead> <tr> <th>Plug</th> <th>Cable</th> </tr> </thead> <tbody> <tr> <td>1</td> <td>Brown</td> </tr> <tr> <td>2</td> <td>White</td> </tr> <tr> <td>3</td> <td>Blue</td> </tr> <tr> <td>4</td> <td>Black</td> </tr> <tr> <td>5</td> <td>Gray</td> </tr> </tbody> </table> <p>M12x1 plug</p>	Plug	Cable	1	Brown	2	White	3	Blue	4	Black	5	Gray		
Plug	Cable													
1	Brown													
2	White													
3	Blue													
4	Black													
5	Gray													
 <table border="1" style="margin-left: 20px;"> <thead> <tr> <th>Plug</th> </tr> </thead> <tbody> <tr> <td>1</td> </tr> <tr> <td>2</td> </tr> <tr> <td>3</td> </tr> </tbody> </table> <p>Solenoid plug</p>	Plug	1	2	3										
Plug														
1														
2														
3														

LEVEL

### Dimensions in inches (mm)



### Order Code

- LW :** Float level switch
- 100 :** Series# – compact
- 01 :** 1 float
- 02 :** 2 floats
- G :** G1 male thread

LW	100/	01	G	H	M1000	O	-	-	/
----	------	----	---	---	-------	---	---	---	---

**H :** Solenoid plug

**S :** M12X1 plug

**MXXXX :** Rod length(metric system) L=xxxx mm

**IXXXX :** Rod length(english system) L=xxxx inch

Note : M1000 means that the rod length is 1000mm with the valid range 970mm. Max. M1000.

#### Switching Output

**O :** Normally opened

**C :** Normally closed

**- :** Without temperature switch

**TO :** Temperature switch TS-LW100 with normally opened (N/O)

**TC :** Temperature switch TS-LW100 with normally closed (N/C)

**- :** None

**4 :** Switching temperature +40°C

**5 :** Switching temperature +50°C

**6 :** Switching temperature +60°C

**7 :** Switching temperature +70°C

**8 :** Switching temperature +80°C

**Note :** Switching temperature only for LW100 with temperature switch.

**Please indicate the length of L.**

### Special Order on Request

- ▶ Electrical/process connection
- ▶ Float material/size
- ▶ Rod material/length